

# Heaven and Earth Designs

## Lost In You

Chart No: HAERM 508

By Michele Sayetta

Artwork by Rachel Marks



Finished Design Size 400 W by 600 H (16 WX 24 H inches on 25ct fabric)

Heaven and Earth Designs

425 9th Street SW

Willmar MN 56201

320-214-7998

[www.heavenandearthdesigns.com](http://www.heavenandearthdesigns.com)

Copyright Heaven and Earth Designs 2007

Copyright Rachel Marks 2007

## Instructions

The model for *Lost In You* is recommended to be stitched over 1 on 25ct, Linen or Evenweave may be used. You may use 1 or 2 strands of floss depending on your preference.

It is recommended that you make working copies and enlarge to view detail and symbols.

We also suggest using a #28 needle when working over 1 on 25ct.

This is a large project that will offer many hours of stitching pleasure.












We thank you for purchasing this design and welcome any questions or comments that you may have.

*Heaven and Earth Designs*  
320-214-7998

*[Http://www.heavenandearthdesigns.com](http://www.heavenandearthdesigns.com)*

**Pattern Name:** Lost In You-Marks  
**Designed By:** Michele Sayetta  
**Company:** Heaven and Earth Designs  
**Copyright:** 2007  
**Fabric:** Linen 25, White  
 400w X 600h Stitches  
**Size:** 25 Count, 16w X 24h in

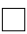
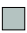









### Floss Used for Full Stitches:

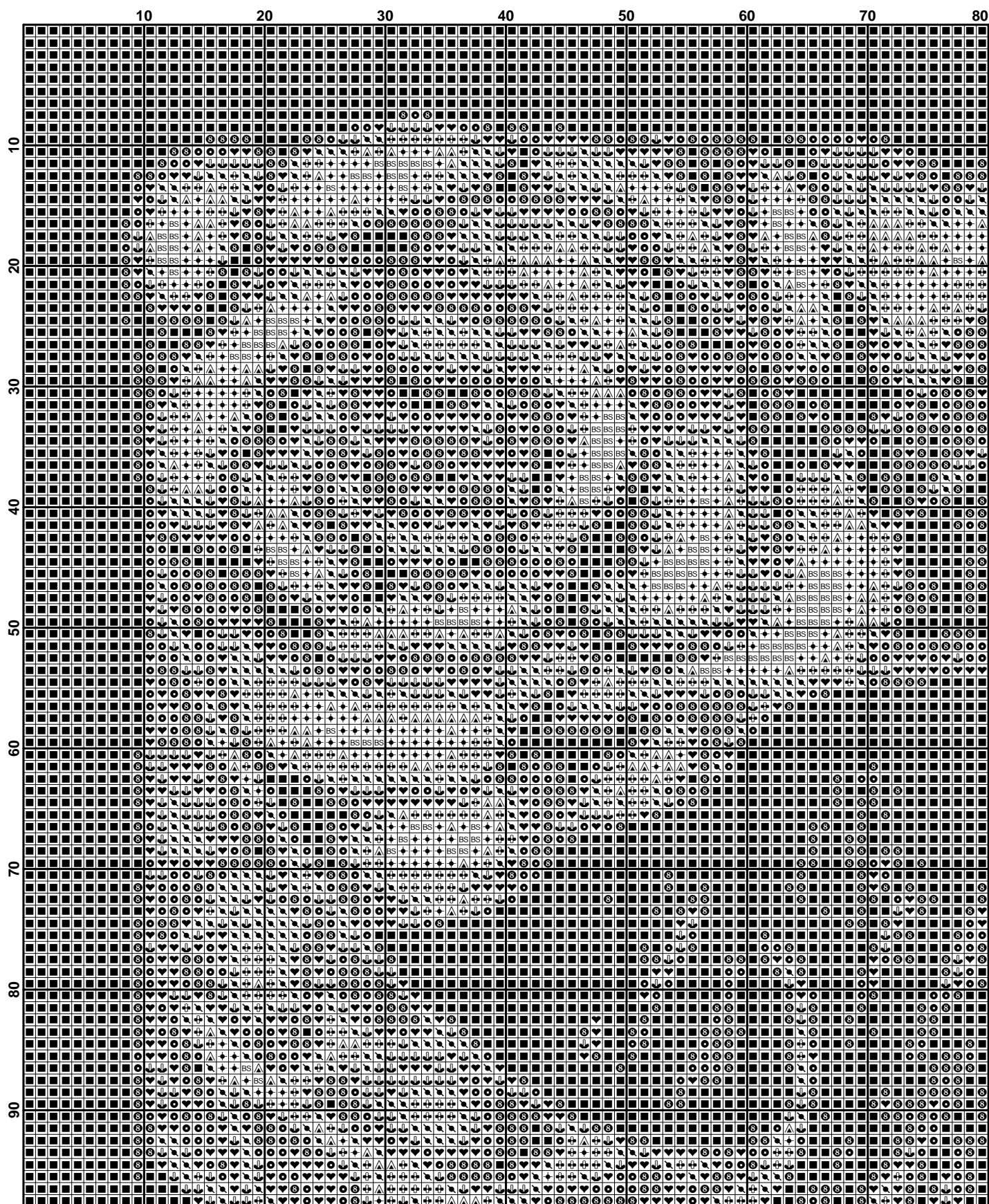
Symbol	Strands	Type	Number	Color
	2	DMC	1	White
	2	DMC	168	Pewter-VYLT
	2	DMC	169	Pewter-LT
	2	DMC	310	Black
	2	DMC	317	Pewter Gray
	2	DMC	318	Steel Gray-LT
	2	DMC	413	Pewter Gray-DK
	2	DMC	414	Steel Gray-DK
	2	DMC	415	Pearl Gray
	2	DMC	762	Pearl Gray-VYLT
	2	DMC	3799	Pewter Gray-VYDK

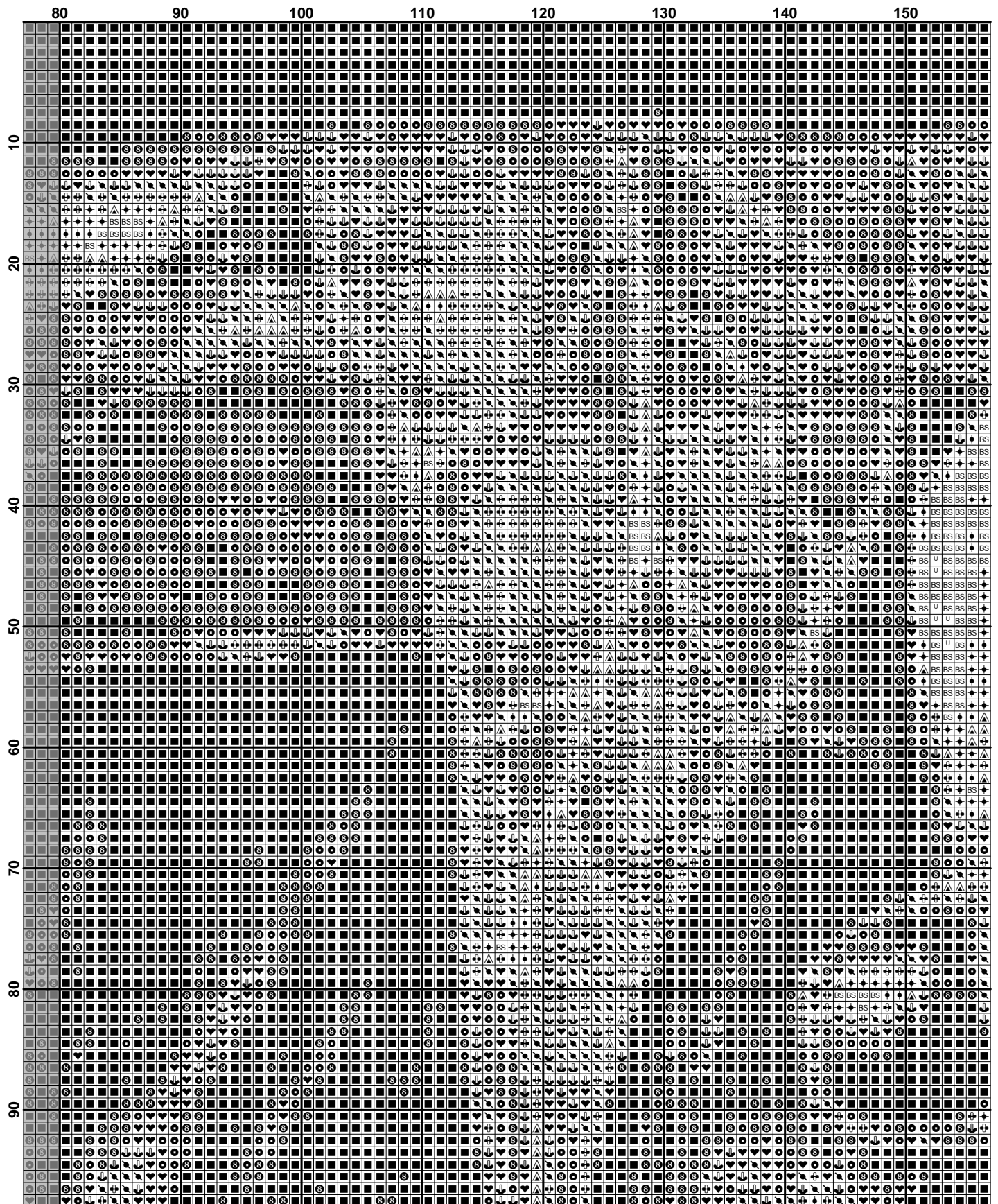
## Usage Summary

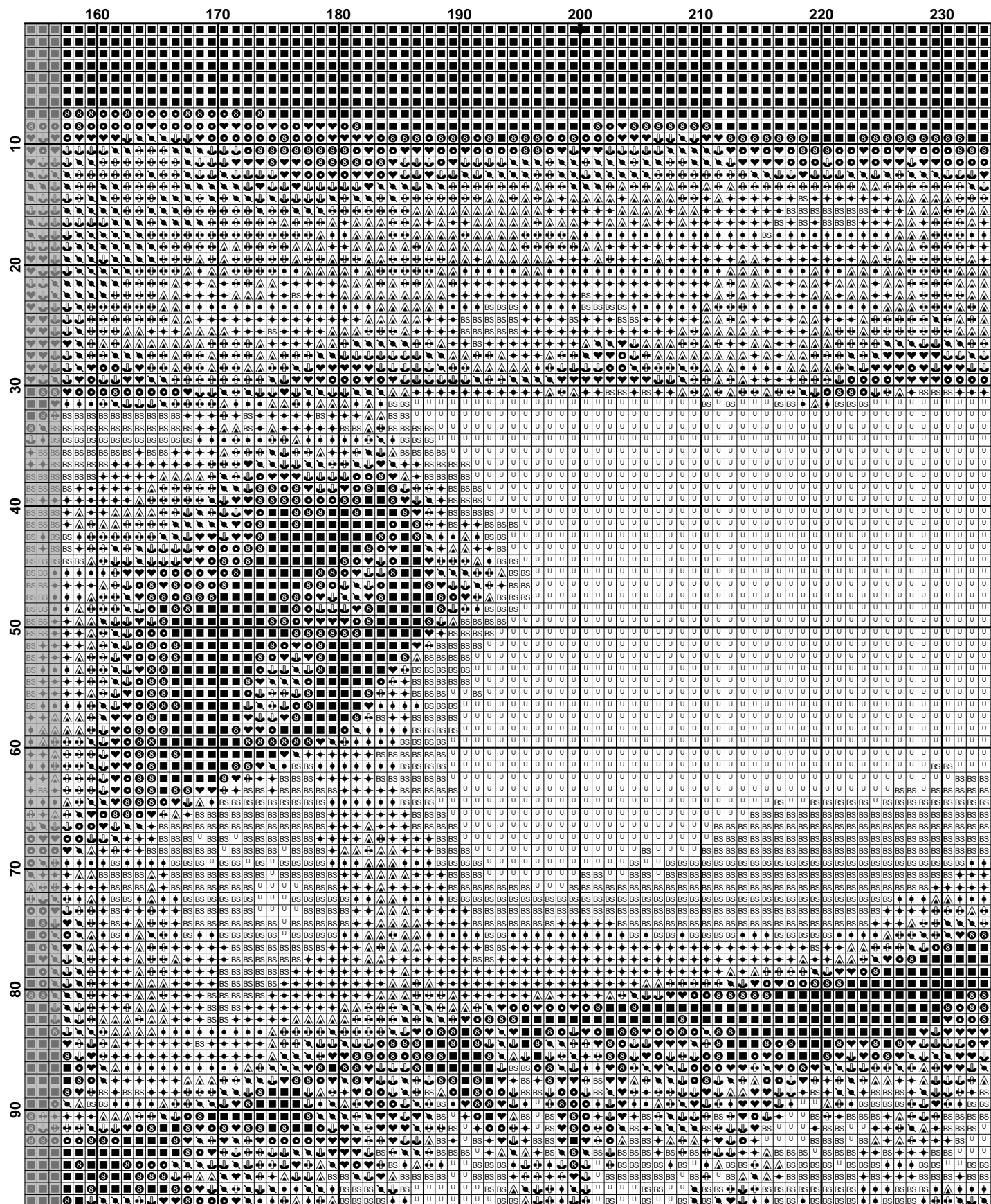
Strands Per Skein: 6

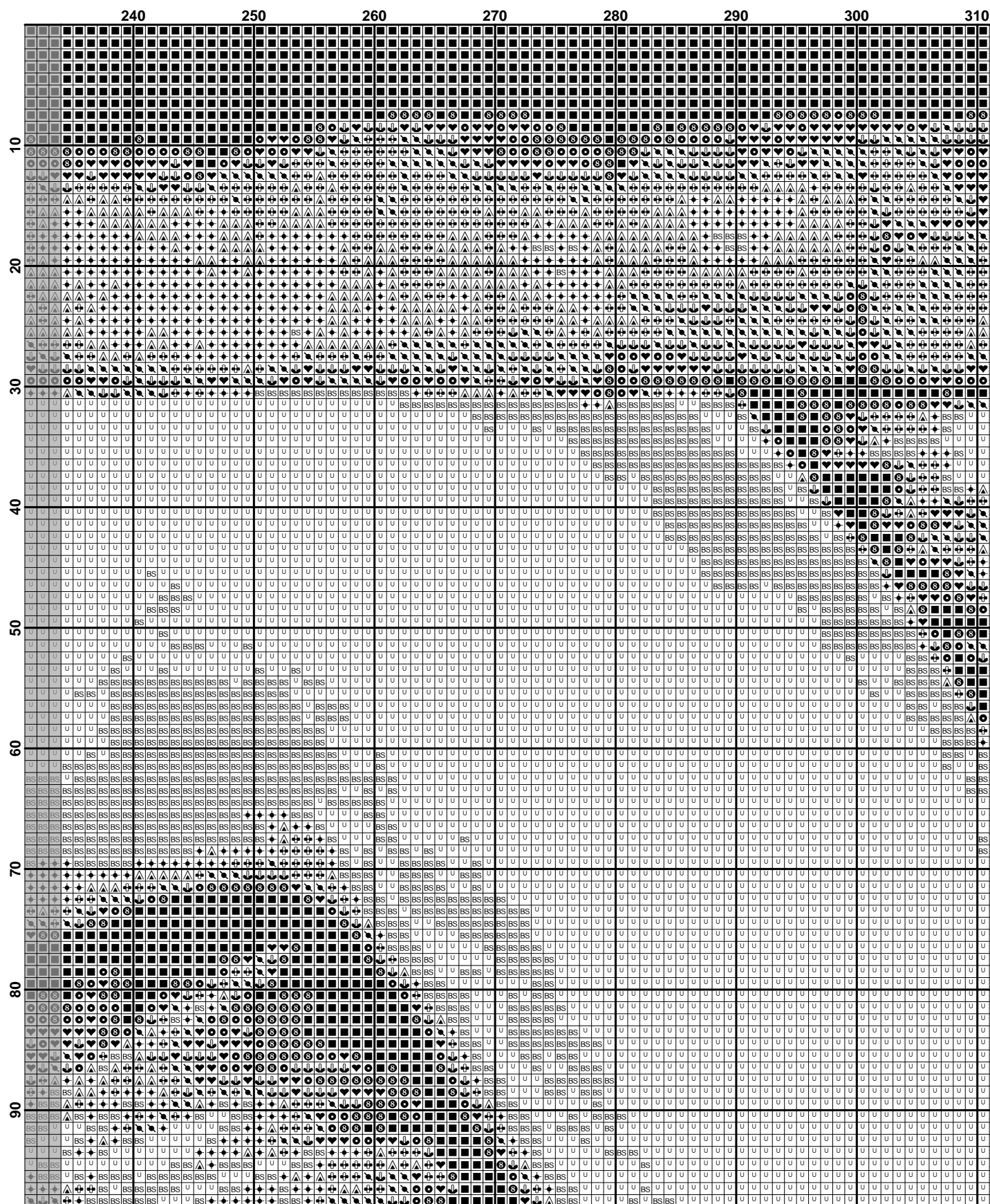
Skein Length: 313.0 in

Type	Number	Full	Half	Quarter	Petite	Back(in)	Str(in)	Spec(in)	French	Bead	Skein Est.
 DMC 1	60198	0	0	0	0.0	0.0	0.0	0	0	17.000	
 DMC 168	8397	0	0	0	0.0	0.0	0.0	0	0	3.000	
 DMC 169	11493	0	0	0	0.0	0.0	0.0	0	0	4.000	
 DMC 310	40806	0	0	0	0.0	0.0	0.0	0	0	12.000	
 DMC 317	11644	0	0	0	0.0	0.0	0.0	0	0	4.000	
 DMC 318	15199	0	0	0	0.0	0.0	0.0	0	0	5.000	
 DMC 413	10312	0	0	0	0.0	0.0	0.0	0	0	3.000	
 DMC 414	10672	0	0	0	0.0	0.0	0.0	0	0	3.000	
 DMC 415	19258	0	0	0	0.0	0.0	0.0	0	0	6.000	
 DMC 762	36708	0	0	0	0.0	0.0	0.0	0	0	11.000	
 DMC 3799	15313	0	0	0	0.0	0.0	0.0	0	0	5.000	

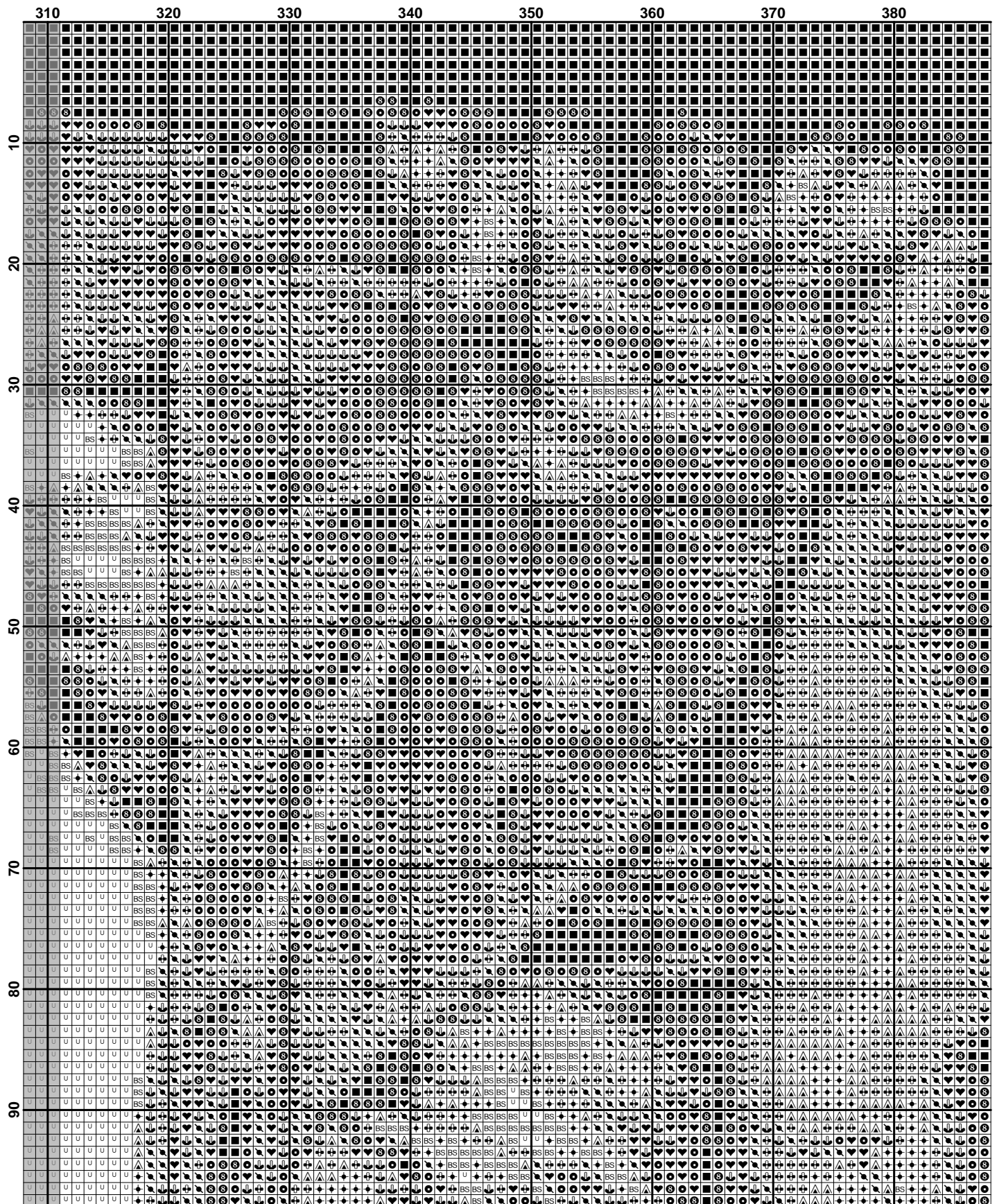


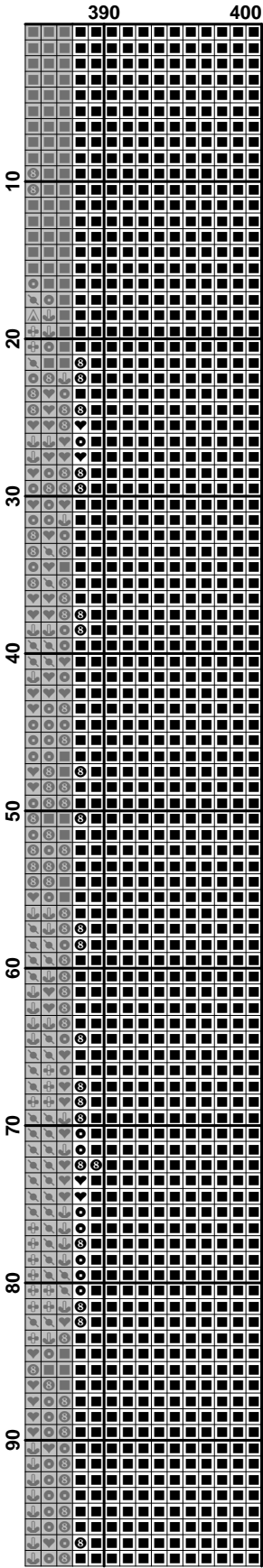


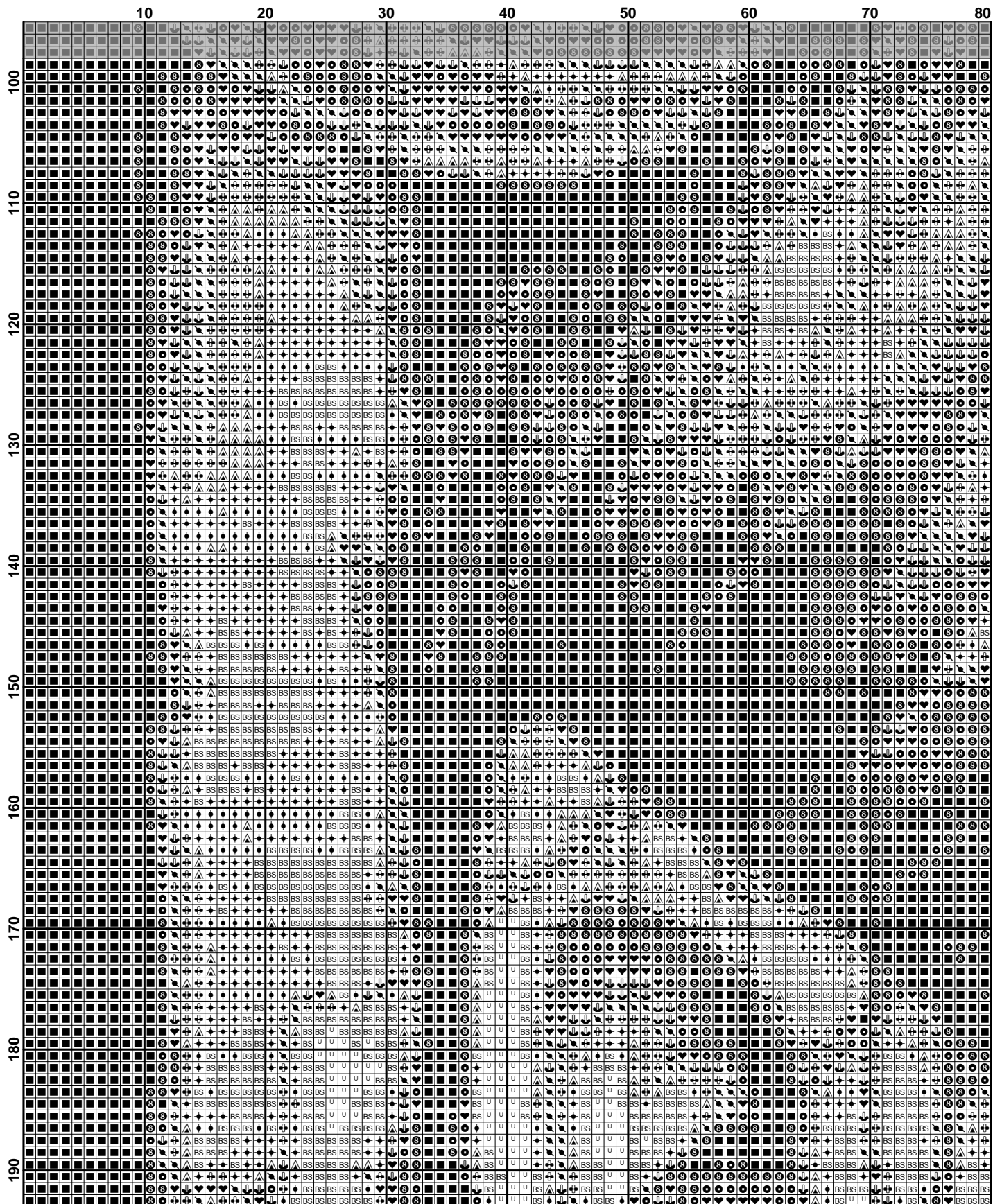


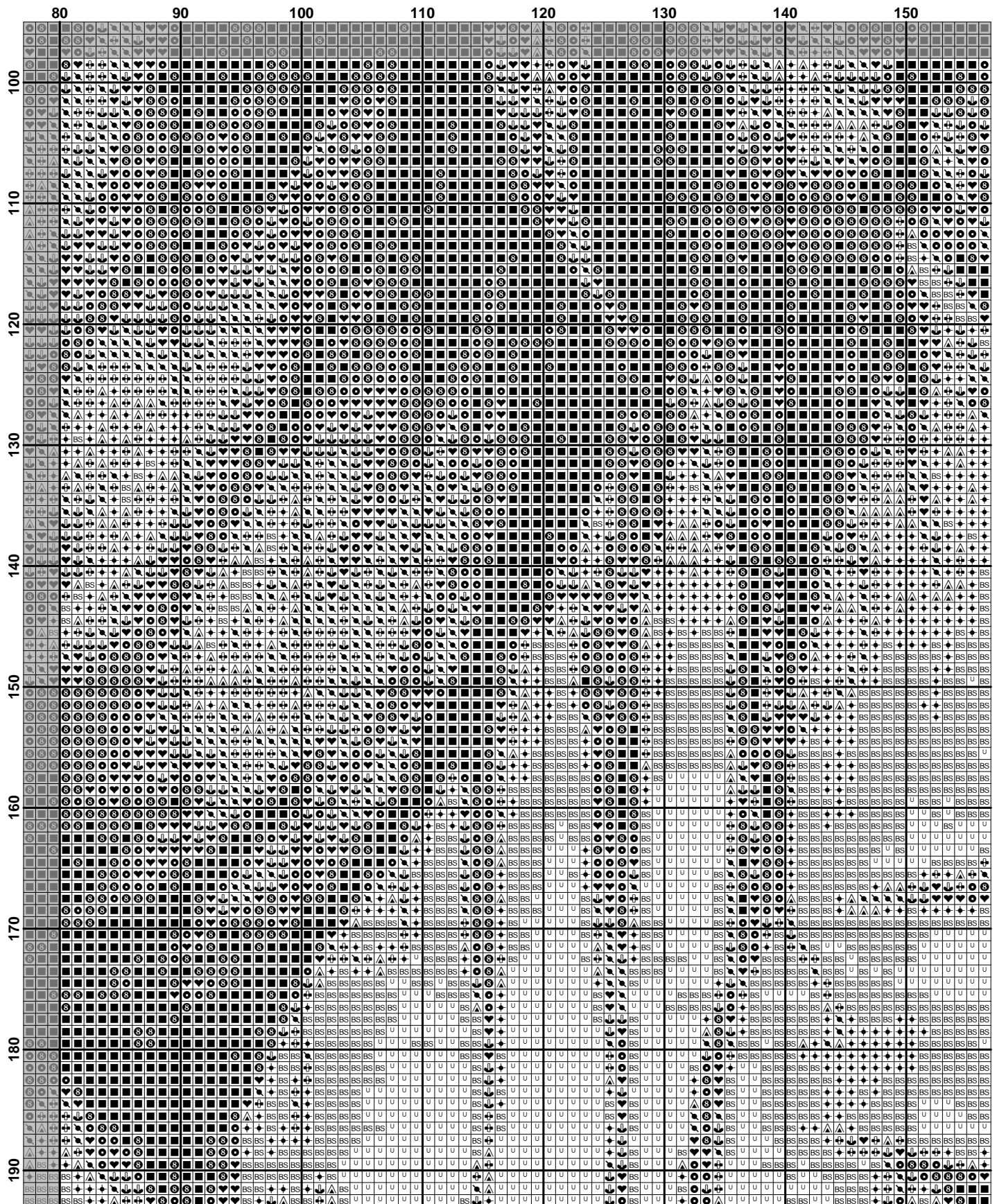








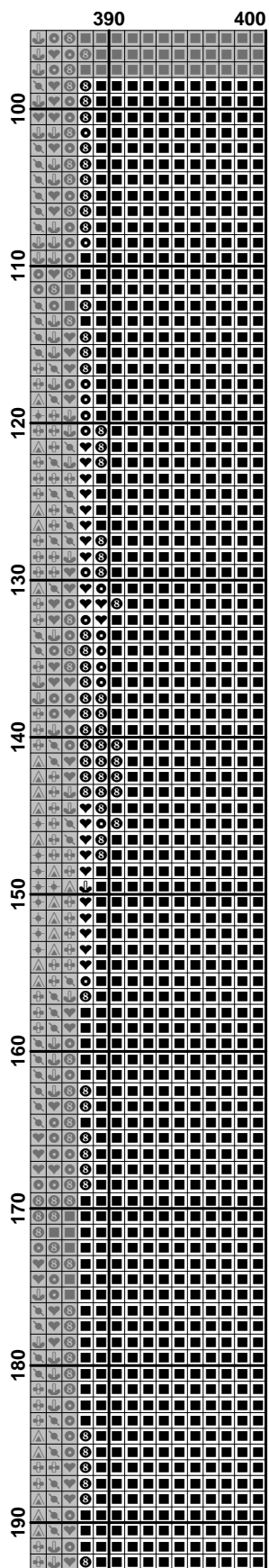




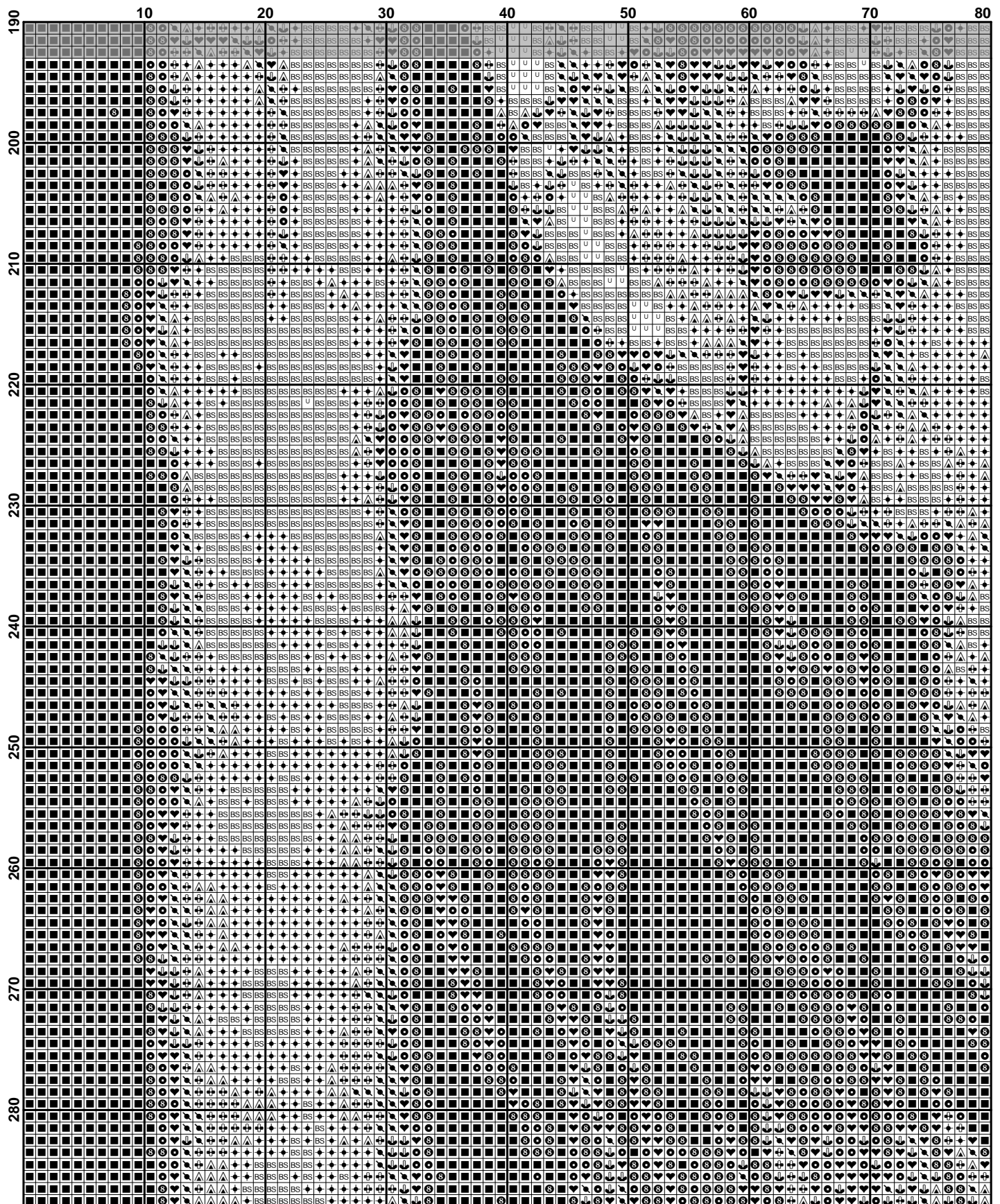
	160	170	180	190	200	210	220	230
100	BS	BS	BS	BS	BS	BS	BS	BS
110	BS	BS	BS	BS	BS	BS	BS	BS
120	BS	BS	BS	BS	BS	BS	BS	BS
130	BS	BS	BS	BS	BS	BS	BS	BS
140	BS	BS	BS	BS	BS	BS	BS	BS
150	BS	BS	BS	BS	BS	BS	BS	BS
160	BS	BS	BS	BS	BS	BS	BS	BS
170	BS	BS	BS	BS	BS	BS	BS	BS
180	BS	BS	BS	BS	BS	BS	BS	BS
190	BS	BS	BS	BS	BS	BS	BS	BS

	240	250	260	270	280	290	300	310
100	+	+	+	+	+	+	+	+
110	+	+	+	+	+	+	+	+
120	+	+	+	+	+	+	+	+
130	+	+	+	+	+	+	+	+
140	+	+	+	+	+	+	+	+
150	+	+	+	+	+	+	+	+
160	+	+	+	+	+	+	+	+
170	+	+	+	+	+	+	+	+
180	+	+	+	+	+	+	+	+
190	+	+	+	+	+	+	+	+

	310	320	330	340	350	360	370	380
100								
110								
120								
130								
140								
150								
160								
170								
180								
190								





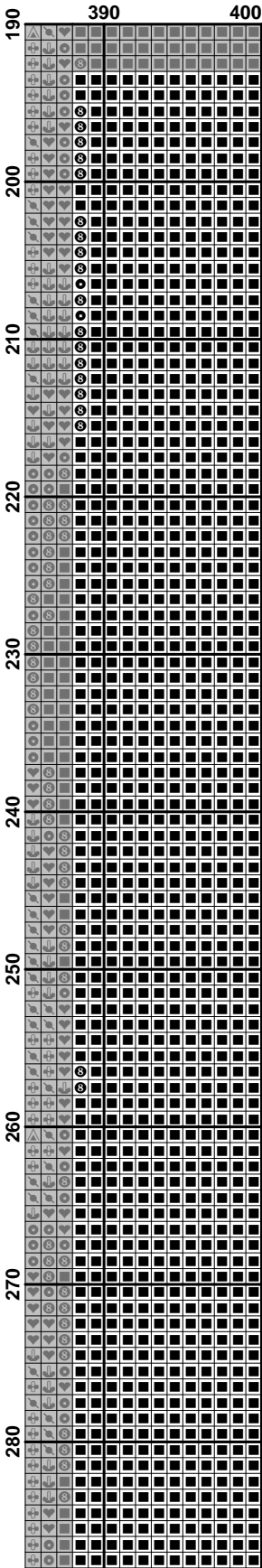




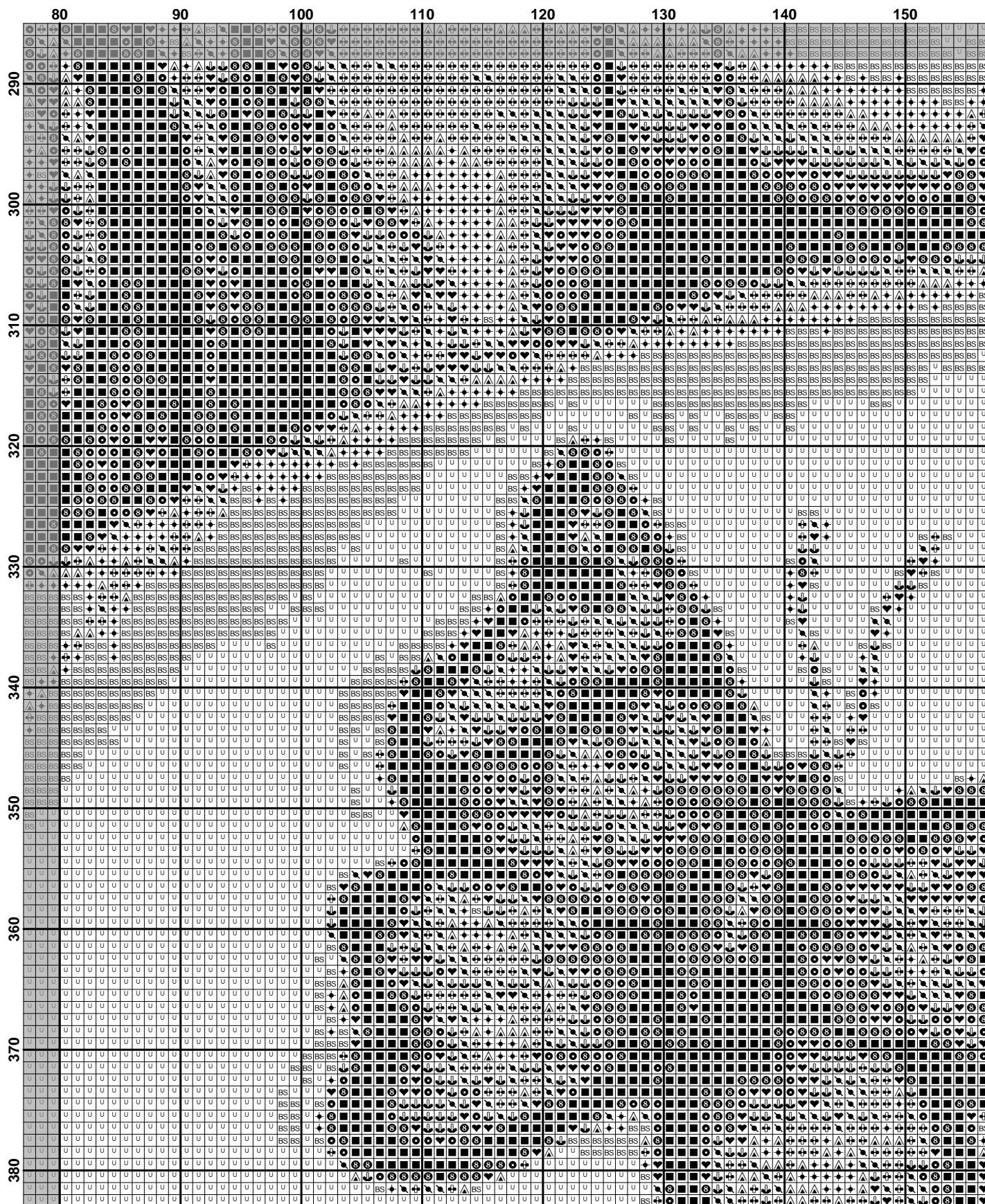
	160	170	180	190	200	210	220	230
190								
200								
210								
220								
230								
240								
250								
260								
270								
280								

	240	250	260	270	280	290	300	310
190	U	U	U	U	U	U	U	U
191	U	U	U	U	U	U	U	U
192	U	U	U	U	U	U	U	U
193	U	U	U	U	U	U	U	U
194	U	U	U	U	U	U	U	U
195	U	U	U	U	U	U	U	U
196	U	U	U	U	U	U	U	U
197	U	U	U	U	U	U	U	U
198	U	U	U	U	U	U	U	U
199	U	U	U	U	U	U	U	U
200	U	U	U	U	U	U	U	U
201	U	U	U	U	U	U	U	U
202	U	U	U	U	U	U	U	U
203	U	U	U	U	U	U	U	U
204	U	U	U	U	U	U	U	U
205	U	U	U	U	U	U	U	U
206	U	U	U	U	U	U	U	U
207	U	U	U	U	U	U	U	U
208	U	U	U	U	U	U	U	U
209	U	U	U	U	U	U	U	U
210	U	U	U	U	U	U	U	U
211	U	U	U	U	U	U	U	U
212	U	U	U	U	U	U	U	U
213	U	U	U	U	U	U	U	U
214	U	U	U	U	U	U	U	U
215	U	U	U	U	U	U	U	U
216	U	U	U	U	U	U	U	U
217	U	U	U	U	U	U	U	U
218	U	U	U	U	U	U	U	U
219	U	U	U	U	U	U	U	U
220	U	U	U	U	U	U	U	U
221	U	U	U	U	U	U	U	U
222	U	U	U	U	U	U	U	U
223	U	U	U	U	U	U	U	U
224	U	U	U	U	U	U	U	U
225	U	U	U	U	U	U	U	U
226	U	U	U	U	U	U	U	U
227	U	U	U	U	U	U	U	U
228	U	U	U	U	U	U	U	U
229	U	U	U	U	U	U	U	U
230	U	U	U	U	U	U	U	U
231	U	U	U	U	U	U	U	U
232	U	U	U	U	U	U	U	U
233	U	U	U	U	U	U	U	U
234	U	U	U	U	U	U	U	U
235	U	U	U	U	U	U	U	U
236	U	U	U	U	U	U	U	U
237	U	U	U	U	U	U	U	U
238	U	U	U	U	U	U	U	U
239	U	U	U	U	U	U	U	U
240	U	U	U	U	U	U	U	U
241	U	U	U	U	U	U	U	U
242	U	U	U	U	U	U	U	U
243	U	U	U	U	U	U	U	U
244	U	U	U	U	U	U	U	U
245	U	U	U	U	U	U	U	U
246	U	U	U	U	U	U	U	U
247	U	U	U	U	U	U	U	U
248	U	U	U	U	U	U	U	U
249	U	U	U	U	U	U	U	U
250	U	U	U	U	U	U	U	U
251	U	U	U	U	U	U	U	U
252	U	U	U	U	U	U	U	U
253	U	U	U	U	U	U	U	U
254	U	U	U	U	U	U	U	U
255	U	U	U	U	U	U	U	U
256	U	U	U	U	U	U	U	U
257	U	U	U	U	U	U	U	U
258	U	U	U	U	U	U	U	U
259	U	U	U	U	U	U	U	U
260	U	U	U	U	U	U	U	U
261	U	U	U	U	U	U	U	U
262	U	U	U	U	U	U	U	U
263	U	U	U	U	U	U	U	U
264	U	U	U	U	U	U	U	U
265	U	U	U	U	U	U	U	U
266	U	U	U	U	U	U	U	U
267	U	U	U	U	U	U	U	U
268	U	U	U	U	U	U	U	U
269	U	U	U	U	U	U	U	U
270	U	U	U	U	U	U	U	U
271	U	U	U	U	U	U	U	U
272	U	U	U	U	U	U	U	U
273	U	U	U	U	U	U	U	U
274	U	U	U	U	U	U	U	U
275	U	U	U	U	U	U	U	U
276	U	U	U	U	U	U	U	U
277	U	U	U	U	U	U	U	U
278	U	U	U	U	U	U	U	U
279	U	U	U	U	U	U	U	U
280	U	U	U	U	U	U	U	U
281	U	U	U	U	U	U	U	U
282	U	U	U	U	U	U	U	U
283	U	U	U	U	U	U	U	U
284	U	U	U	U	U	U	U	U
285	U	U	U	U	U	U	U	U
286	U	U	U	U	U	U	U	U
287	U	U	U	U	U	U	U	U
288	U	U	U	U	U	U	U	U
289	U	U	U	U	U	U	U	U
290	U	U	U	U	U	U	U	U
291	U	U	U	U	U	U	U	U
292	U	U	U	U	U	U	U	U
293	U	U	U	U	U	U	U	U
294	U	U	U	U	U	U	U	U
295	U	U	U	U	U	U	U	U
296	U	U	U	U	U	U	U	U
297	U	U	U	U	U	U	U	U
298	U	U	U	U	U	U	U	U
299	U	U	U	U	U	U	U	U
300	U	U	U	U	U	U	U	U
301	U	U	U	U	U	U	U	U
302	U	U	U	U	U	U	U	U
303	U	U	U	U	U	U	U	U
304	U	U	U	U	U	U	U	U
305	U	U	U	U	U	U	U	U
306	U	U	U	U	U	U	U	U
307	U	U	U	U	U	U	U	U
308	U	U	U	U	U	U	U	U
309	U	U	U	U	U	U	U	U
310	U	U	U	U	U	U	U	U

	310	320	330	340	350	360	370	380
190	BS	BS	BS	BS	BS	BS	BS	BS
200	BS	BS	BS	BS	BS	BS	BS	BS
210	BS	BS	BS	BS	BS	BS	BS	BS
220	BS	BS	BS	BS	BS	BS	BS	BS
230	BS	BS	BS	BS	BS	BS	BS	BS
240	BS	BS	BS	BS	BS	BS	BS	BS
250	BS	BS	BS	BS	BS	BS	BS	BS
260	BS	BS	BS	BS	BS	BS	BS	BS
270	BS	BS	BS	BS	BS	BS	BS	BS
280	BS	BS	BS	BS	BS	BS	BS	BS



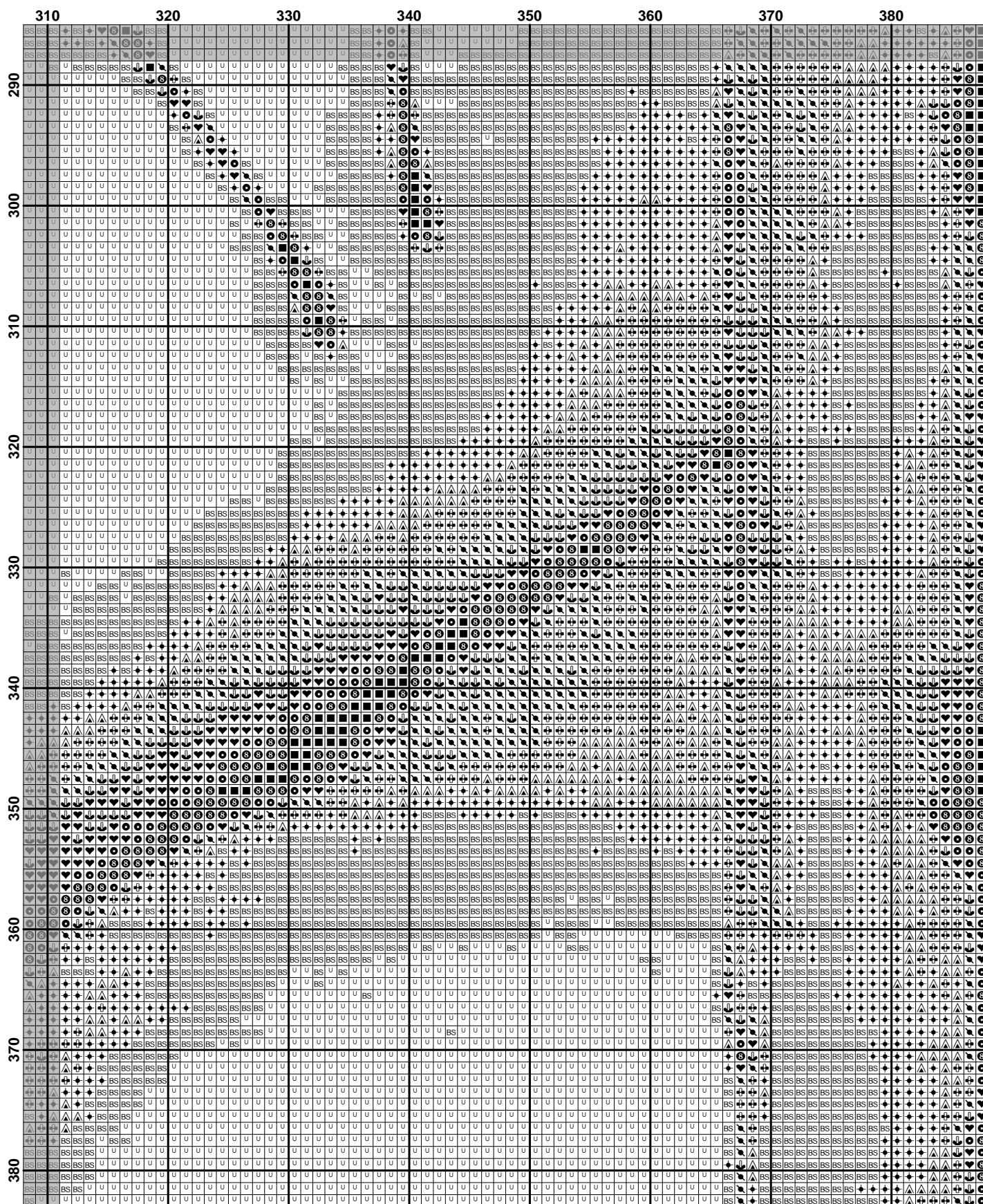
	10	20	30	40	50	60	70	80
290								
300								
310								
320								
330								
340								
350								
360								
370								
380								

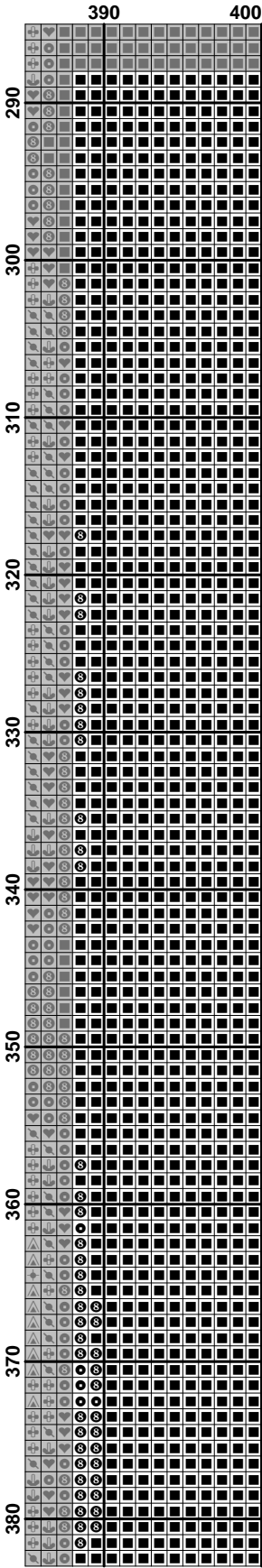




[illegible]

	240										250										260										270										280										290										300										310																																																																																																																																																																																																																																															
290																																																																																																																																																																																																																																																																																																																						
300																																																																																																																																																																																																																																																																																																																						
310																																																																																																																																																																																																																																																																																																																						
320																																																																																																																																																																																																																																																																																																																						
330																																																																																																																																																																																																																																																																																																																						
340																																																																																																																																																																																																																																																																																																																						
350																																																																																																																																																																																																																																																																																																																						
360																																																																																																																																																																																																																																																																																																																						
370																																																																																																																																																																																																																																																																																																																						
380																																																																																																																																																																																																																																																																																																																						





	10	20	30	40	50	60	70	80
380								
390								
400								
410								
420								
430								
440								
450								
460								
470								

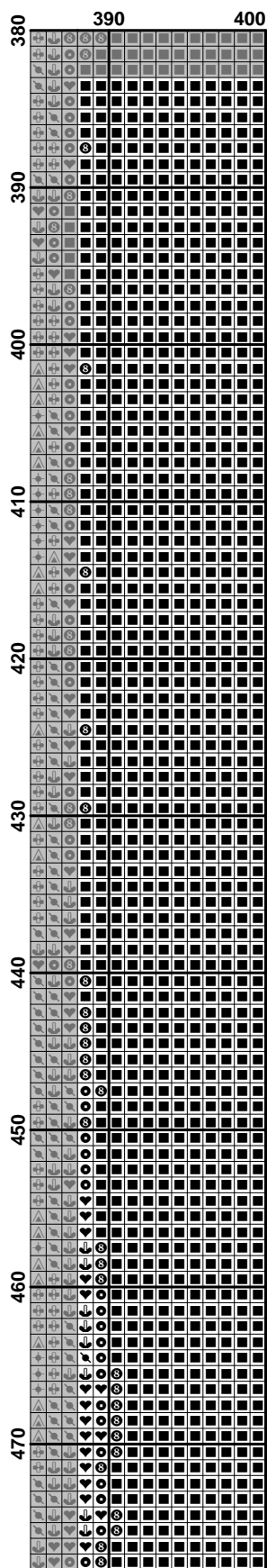
	80	90	100	110	120	130	140	150
380								
390								
400								
410								
420								
430								
440								
450								
460								
470								

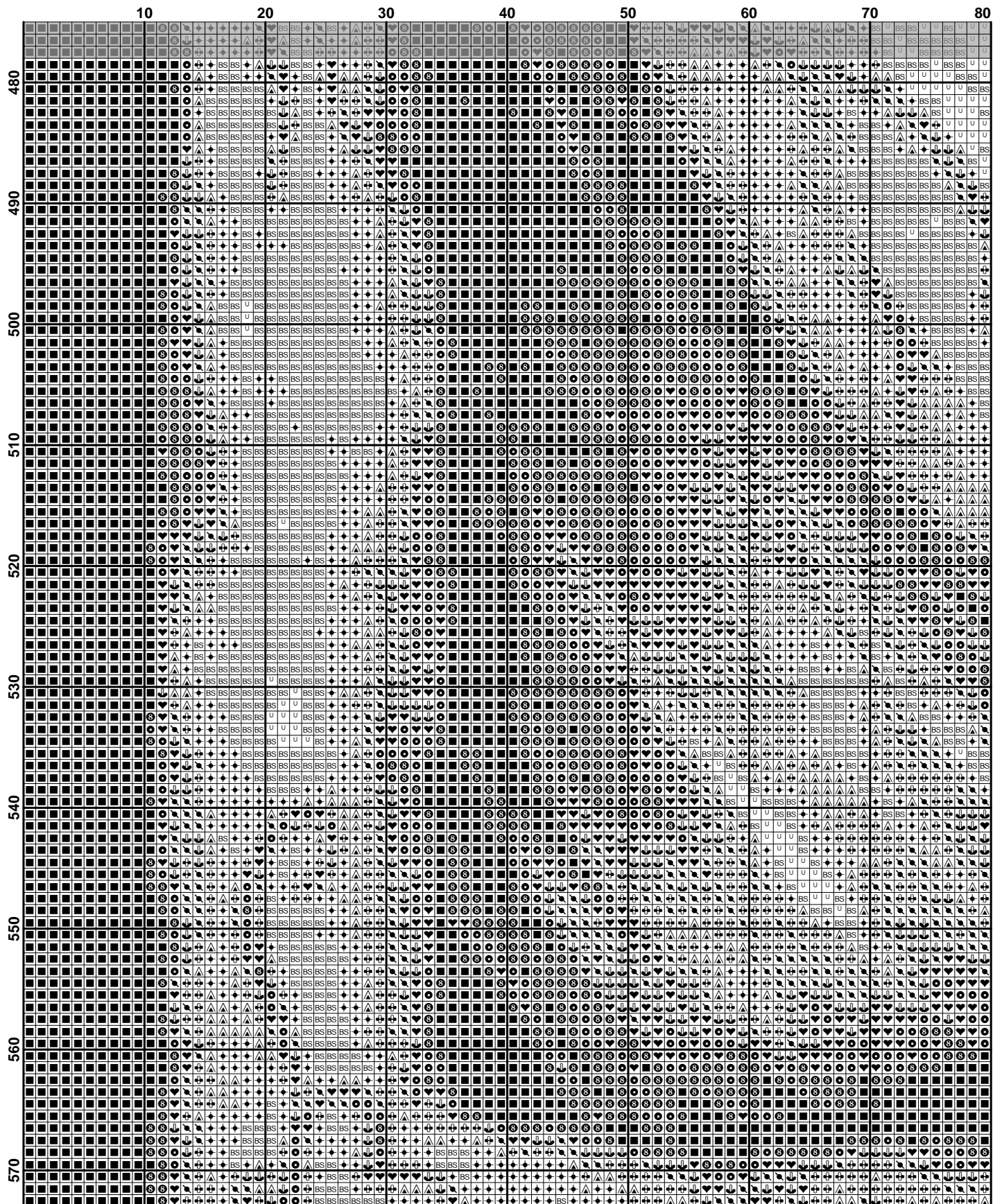
	160	170	180	190	200	210	220	230
380	BS	BS	BS	BS	BS	BS	BS	BS
390	BS	BS	BS	BS	BS	BS	BS	BS
400	BS	BS	BS	BS	BS	BS	BS	BS
410	BS	BS	BS	BS	BS	BS	BS	BS
420	BS	BS	BS	BS	BS	BS	BS	BS
430	BS	BS	BS	BS	BS	BS	BS	BS
440	BS	BS	BS	BS	BS	BS	BS	BS
450	BS	BS	BS	BS	BS	BS	BS	BS
460	BS	BS	BS	BS	BS	BS	BS	BS
470	BS	BS	BS	BS	BS	BS	BS	BS

	240	250	260	270	280	290	300	310
380	U	U	BS	BS	BS	BS	BS	BS
390	BS	BS	BS	BS	BS	BS	BS	BS
400	BS	BS	BS	BS	BS	BS	BS	BS
410	BS	BS	BS	BS	BS	BS	BS	BS
420	BS	BS	BS	BS	BS	BS	BS	BS
430	BS	BS	BS	BS	BS	BS	BS	BS
440	BS	BS	BS	BS	BS	BS	BS	BS
450	BS	BS	BS	BS	BS	BS	BS	BS
460	BS	BS	BS	BS	BS	BS	BS	BS
470	BS	BS	BS	BS	BS	BS	BS	BS

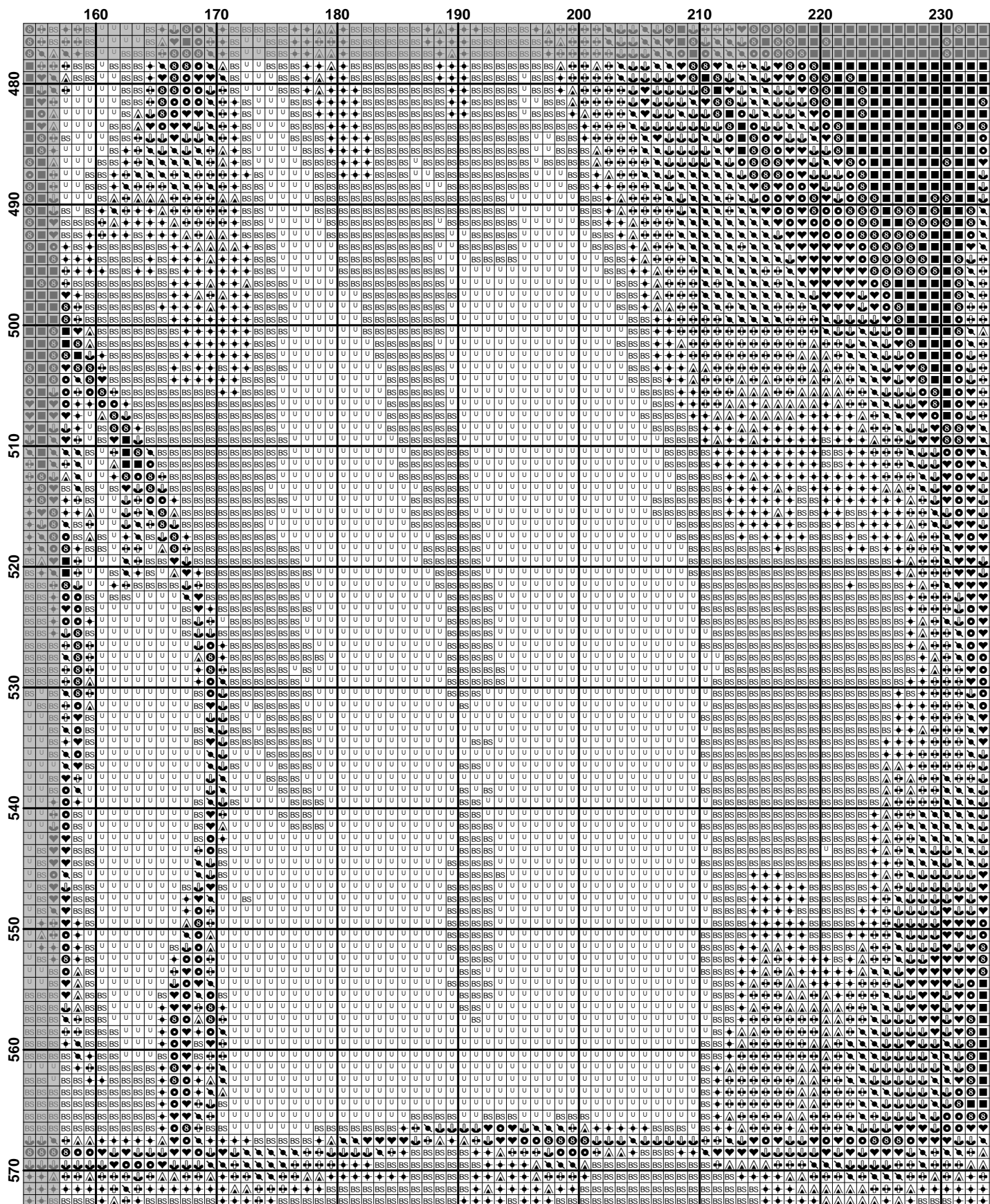


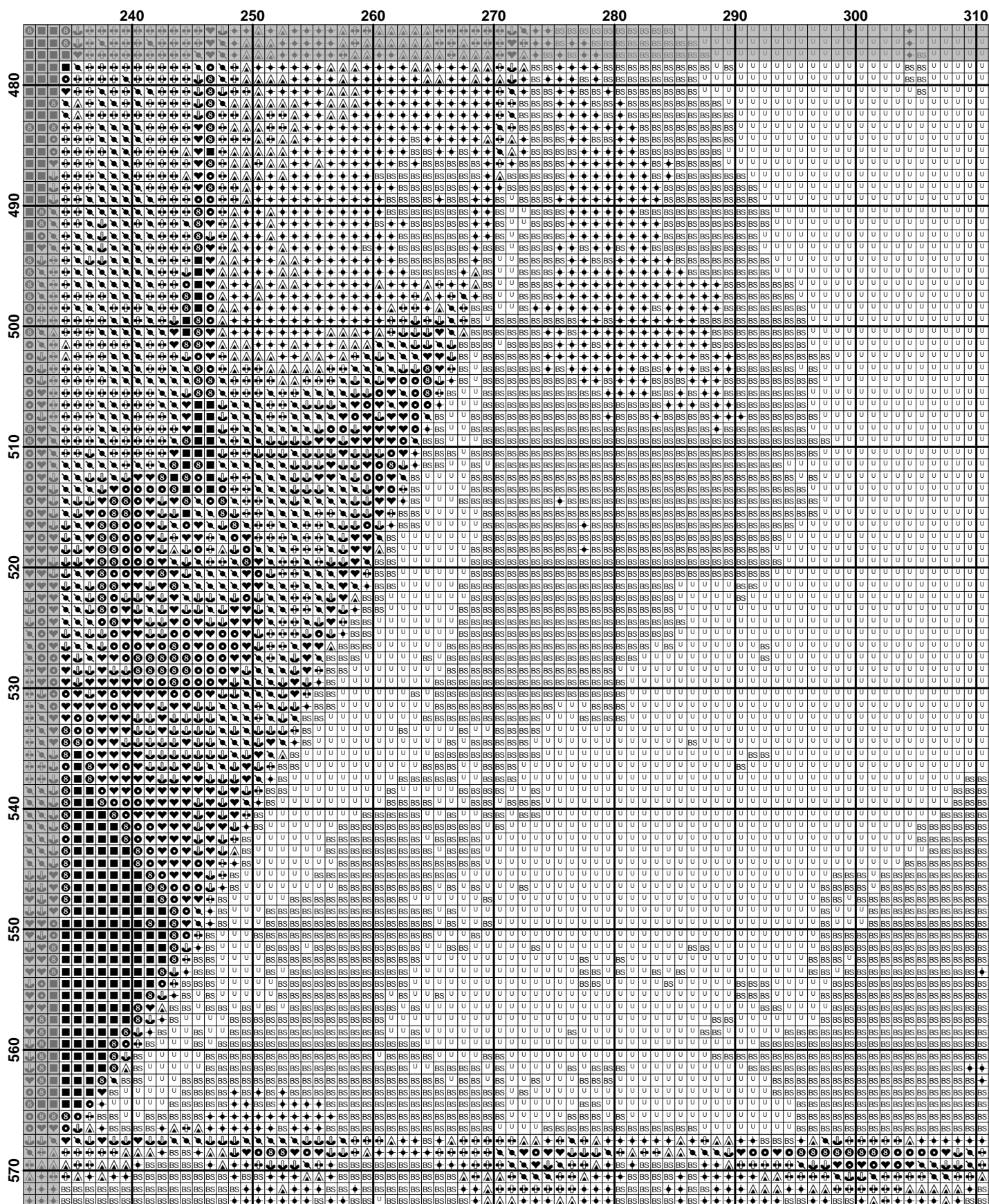
[illegible]



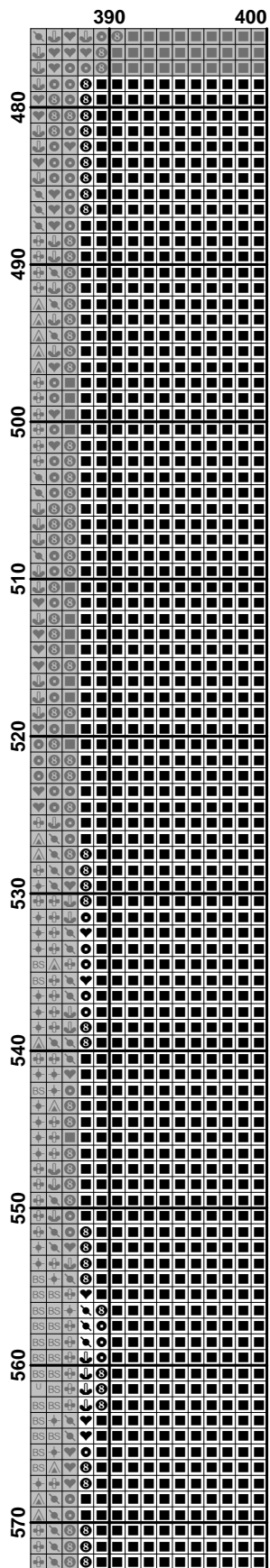


	80	90	100	110	120	130	140	150
480	BS	BS	BS	BS	BS	BS	BS	BS
490	BS	BS	BS	BS	BS	BS	BS	BS
500	BS	BS	BS	BS	BS	BS	BS	BS
510	BS	BS	BS	BS	BS	BS	BS	BS
520	BS	BS	BS	BS	BS	BS	BS	BS
530	BS	BS	BS	BS	BS	BS	BS	BS
540	BS	BS	BS	BS	BS	BS	BS	BS
550	BS	BS	BS	BS	BS	BS	BS	BS
560	BS	BS	BS	BS	BS	BS	BS	BS
570	BS	BS	BS	BS	BS	BS	BS	BS

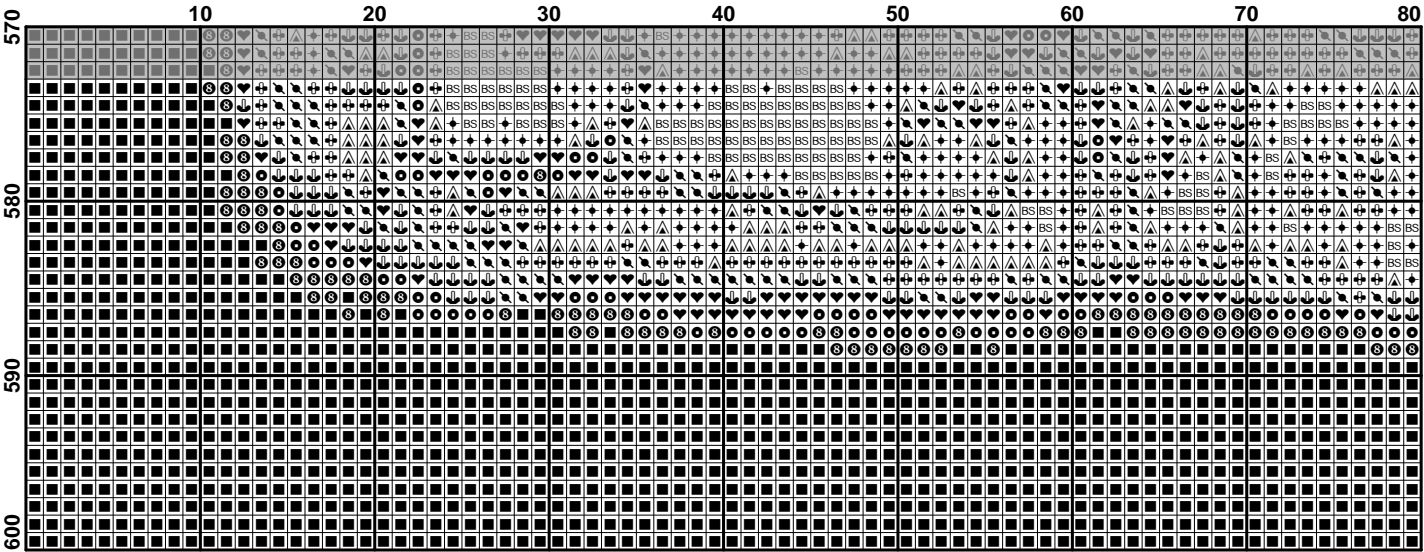




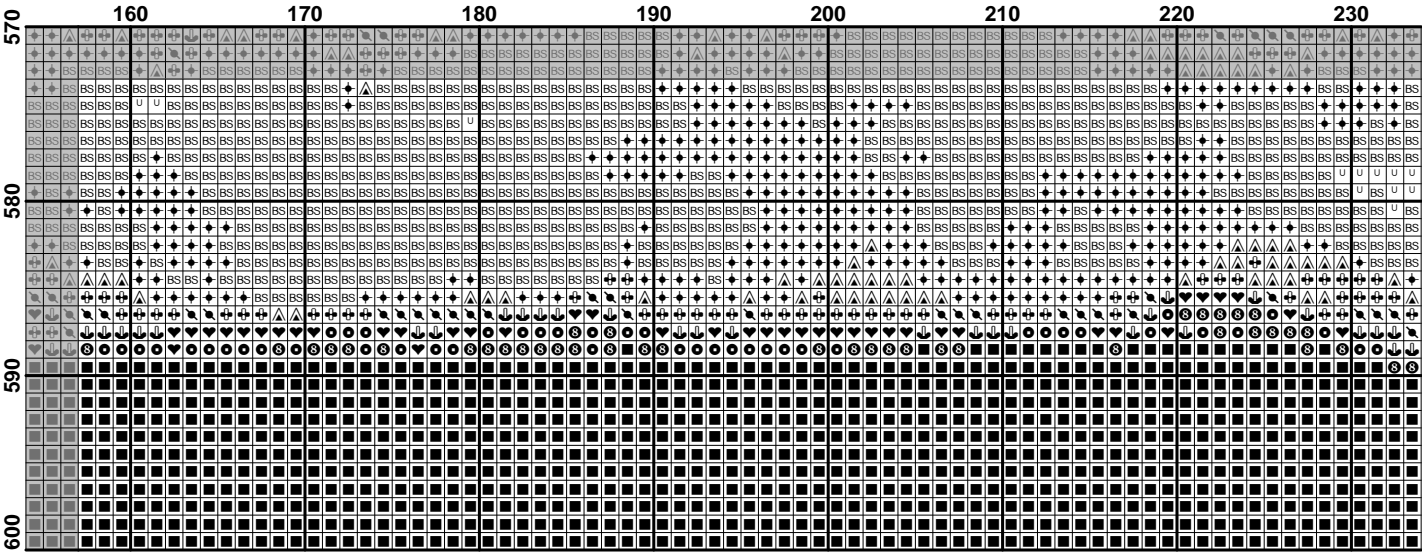
	310	320	330	340	350	360	370	380
480	U	U	U	U	U	U	U	U
481	U	U	U	U	U	U	U	U
482	U	U	U	U	U	U	U	U
483	U	U	U	U	U	U	U	U
484	U	U	U	U	U	U	U	U
485	U	U	U	U	U	U	U	U
486	U	U	U	U	U	U	U	U
487	U	U	U	U	U	U	U	U
488	U	U	U	U	U	U	U	U
489	U	U	U	U	U	U	U	U
490	U	U	U	U	U	U	U	U
491	U	U	U	U	U	U	U	U
492	U	U	U	U	U	U	U	U
493	U	U	U	U	U	U	U	U
494	U	U	U	U	U	U	U	U
495	U	U	U	U	U	U	U	U
496	U	U	U	U	U	U	U	U
497	U	U	U	U	U	U	U	U
498	U	U	U	U	U	U	U	U
499	U	U	U	U	U	U	U	U
500	U	U	U	U	U	U	U	U
501	U	U	U	U	U	U	U	U
502	U	U	U	U	U	U	U	U
503	U	U	U	U	U	U	U	U
504	U	U	U	U	U	U	U	U
505	U	U	U	U	U	U	U	U
506	U	U	U	U	U	U	U	U
507	U	U	U	U	U	U	U	U
508	U	U	U	U	U	U	U	U
509	U	U	U	U	U	U	U	U
510	U	U	U	U	U	U	U	U
511	U	U	U	U	U	U	U	U
512	U	U	U	U	U	U	U	U
513	U	U	U	U	U	U	U	U
514	U	U	U	U	U	U	U	U
515	U	U	U	U	U	U	U	U
516	U	U	U	U	U	U	U	U
517	U	U	U	U	U	U	U	U
518	U	U	U	U	U	U	U	U
519	U	U	U	U	U	U	U	U
520	U	U	U	U	U	U	U	U
521	U	U	U	U	U	U	U	U
522	U	U	U	U	U	U	U	U
523	U	U	U	U	U	U	U	U
524	U	U	U	U	U	U	U	U
525	U	U	U	U	U	U	U	U
526	U	U	U	U	U	U	U	U
527	U	U	U	U	U	U	U	U
528	U	U	U	U	U	U	U	U
529	U	U	U	U	U	U	U	U
530	U	U	U	U	U	U	U	U
531	U	U	U	U	U	U	U	U
532	U	U	U	U	U	U	U	U
533	U	U	U	U	U	U	U	U
534	U	U	U	U	U	U	U	U
535	U	U	U	U	U	U	U	U
536	U	U	U	U	U	U	U	U
537	U	U	U	U	U	U	U	U
538	U	U	U	U	U	U	U	U
539	U	U	U	U	U	U	U	U
540	U	U	U	U	U	U	U	U
541	U	U	U	U	U	U	U	U
542	U	U	U	U	U	U	U	U
543	U	U	U	U	U	U	U	U
544	U	U	U	U	U	U	U	U
545	U	U	U	U	U	U	U	U
546	U	U	U	U	U	U	U	U
547	U	U	U	U	U	U	U	U
548	U	U	U	U	U	U	U	U
549	U	U	U	U	U	U	U	U
550	U	U	U	U	U	U	U	U
551	U	U	U	U	U	U	U	U
552	U	U	U	U	U	U	U	U
553	U	U	U	U	U	U	U	U
554	U	U	U	U	U	U	U	U
555	U	U	U	U	U	U	U	U
556	U	U	U	U	U	U	U	U
557	U	U	U	U	U	U	U	U
558	U	U	U	U	U	U	U	U
559	U	U	U	U	U	U	U	U
560	U	U	U	U	U	U	U	U
561	U	U	U	U	U	U	U	U
562	U	U	U	U	U	U	U	U
563	U	U	U	U	U	U	U	U
564	U	U	U	U	U	U	U	U
565	U	U	U	U	U	U	U	U
566	U	U	U	U	U	U	U	U
567	U	U	U	U	U	U	U	U
568	U	U	U	U	U	U	U	U
569	U	U	U	U	U	U	U	U
570	U	U	U	U	U	U	U	U
571	U	U	U	U	U	U	U	U
572	U	U	U	U	U	U	U	U
573	U	U	U	U	U	U	U	U
574	U	U	U	U	U	U	U	U
575	U	U	U	U	U	U	U	U
576	U	U	U	U	U	U	U	U
577	U	U	U	U	U	U	U	U
578	U	U	U	U	U	U	U	U
579	U	U	U	U	U	U	U	U
580	U	U	U	U	U	U	U	U
581	U	U	U	U	U	U	U	U
582	U	U	U	U	U	U	U	U
583	U	U	U	U	U	U	U	U
584	U	U	U	U	U	U	U	U
585	U	U	U	U	U	U	U	U
586	U	U	U	U	U	U	U	U
587	U	U	U	U	U	U	U	U
588	U	U	U	U	U	U	U	U
589	U	U	U	U	U	U	U	U
590	U	U	U	U	U	U	U	U
591	U	U	U	U	U	U	U	U
592	U	U	U	U	U	U	U	U
593	U	U	U	U	U	U	U	U
594	U	U	U	U	U	U	U	U
595	U	U	U	U	U	U	U	U
596	U	U	U	U	U	U	U	U
597	U	U	U	U	U	U	U	U
598	U	U	U	U	U	U	U	U
599	U	U	U	U	U	U	U	U
600	U	U	U	U	U	U	U	U

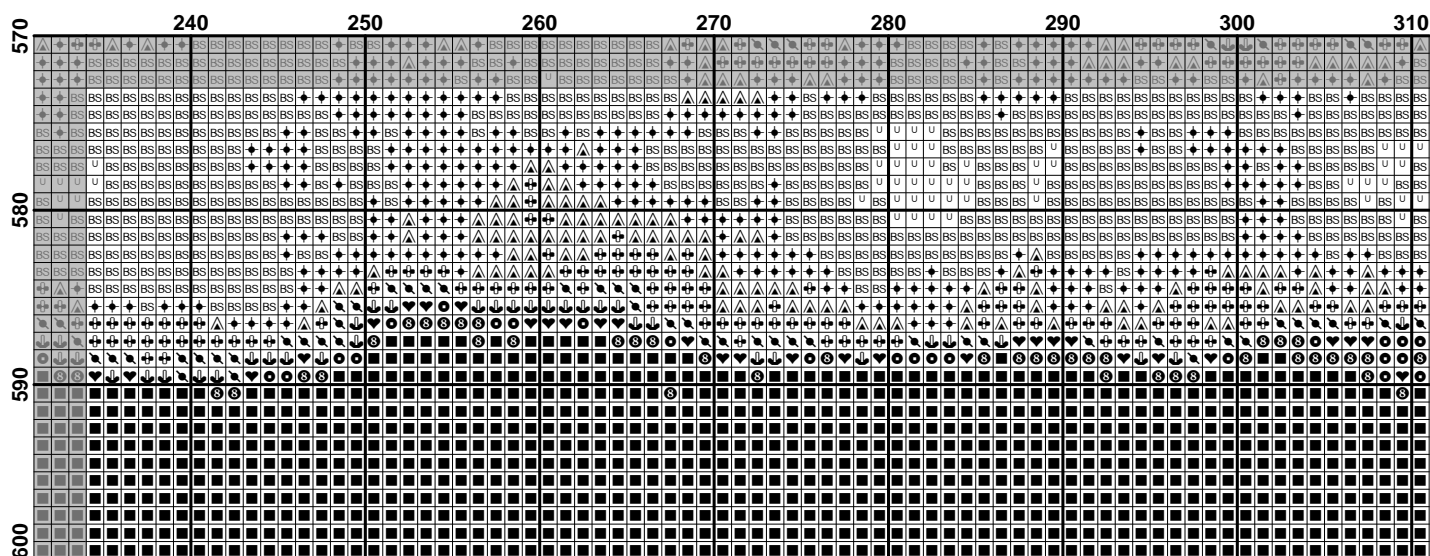






	80	90	100	110	120	130	140	150
570	+	+	+	+	+	+	+	+
580	+	+	+	+	+	+	+	+
590	+	+	+	+	+	+	+	+
600	+	+	+	+	+	+	+	+





[illegible]

